

**SONY**

**Car Stereo  
Service Bulletin**

Sony Service Company - Technical Services  
A Division of Sony Corporation of America  
Sony Drive, Park Ridge, New Jersey 07656

**Model:** RM-X2001

**No. 180**

**Subject:** ACC SW Turns Off, But RM-X2001  
Stays On

**Date:** October 25, 1990

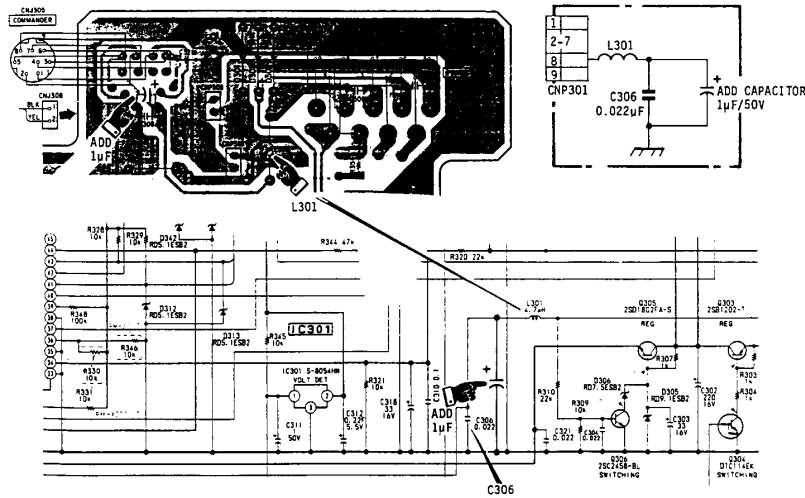
**Symptom:**  
(13)

If when the ACC SW is turned off the back light on the RM-X2001 stays on, the problem is due to the spike generated by L301.

**Solution:** Add a 1 $\mu$ F capacitor across C306.

Ref. No.	Description	Part Number
Electrical Capacitor	1 $\mu$ F/50V	1-126-160-11

**Note:** If the unit is already installed, add a 4.7 $\mu$ F/63V (Part Number 1-123-369-00) from ILL terminal to chassis GND.



Reference: ME-90011

PRINTED IN U.S.A.  
CSA-141090-4

Miscellaneous  
CSA-14